

Courses & distances
Up Creek.

- 1 East 12 perchs
- 5 42 E 20
- 5 24 E 20
- 5 50 E 20
- 5 83 E 20
- N 60 E 100
- N 20 E 28
- N 60 E 30
- N 32 E 19
- N 13 W 29
- 298

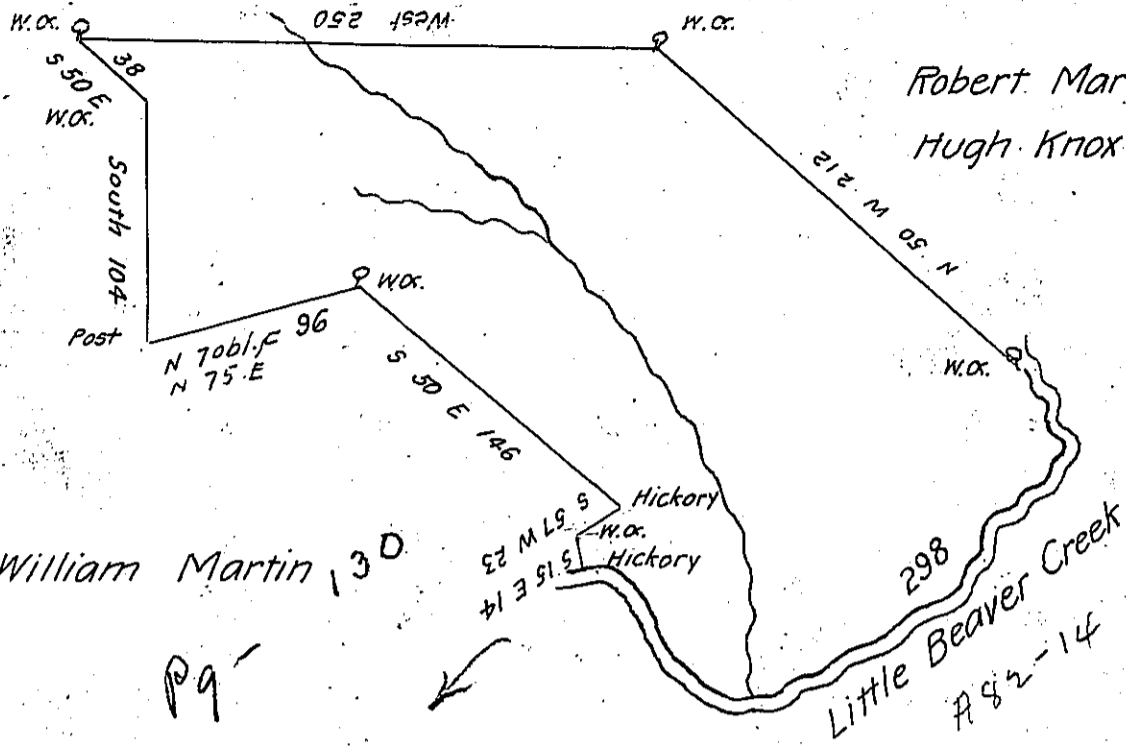
John Reed

Robert McMin

C 137 - 236

(Use this) ✓

(see Pg. 8)



The above is a draft of a tract of land called Sproats delight resurveyed November 30th 1801 by an Order of the Board of Property for Thomas Sproat and in pursuance of a Warrant granted to James McCready dated the 15th day of October 1792 Regularly transferred to the said Thomas Sproat Situate on the east branch of Little Beaver Creek in Beaver County Containing 353 Acres and 96 perches with 6 per cent allowance

Ja^s Carothers D.S.

Samuel Cochran Esq^r S.G.

Note.) There has been an error in the Calculation of the former survey there is a greater quantity by my calculation within the old mark^d. boundary then appeared on the draft in the Survey Book all the alteration made is a South line 104 perches & N 75 E 96 W.O. and a line on the Creek N 13 W 29 per^s

J. C.

IN TESTIMONY that the above is a copy of the original remaining on file in the Department of Internal Affairs of Pennsylvania, made conformably to an Act of Assembly approved the 16th day of February, 1833, I have hereunto set my Hand and caused the Seal of said Department to be affixed at Harrisburg, this eighth day of December 1905

Joseph D. Brown
Secretary of Internal Affairs.